



ALLIANCE FOR JOBS AND CLEAN ENERGY

POLICY BASICS

INVEST IN SOLUTIONS: CLEAN ENERGY, WATER, & FORESTS

The Alliance for Jobs and Clean Energy is putting forth a policy that will invest in clean air, healthy forests, and the transition to a clean energy economy creating tens of thousands of family-sustaining jobs in Washington state.

- **70%** of investments will fund pollution reduction and the transition to a clean energy economy by supporting clean energy projects like wind and solar, energy efficiency, public transit improvements, and electrifying our transportation system.
- **20%** of investments will fund clean and abundant water to help us respond to expected climate impacts on our waterways.
- **10%** of investments will fund healthy forests to absorb more pollution and help prevent wildfires that threaten rural communities and pollute our air.

“ WASHINGTON STATE CAN LEAD THE TRANSITION TO A PROSPEROUS, HEALTHY, CLEAN ENERGY FUTURE.

ABOUT THE ALLIANCE

The Alliance for Jobs and Clean Energy is a coalition of Washington labor unions, health professionals, environmental advocates, businesses, faith communities, and communities of color – plus thousands of volunteers from all over the state – committed to improving the health of our communities, building a clean energy future, and leading the fight against climate change.



ALLIANCE
FOR jobs and
clean energy



A PLAN THAT WORKS FOR ALL OF WASHINGTON

While we are all harmed by climate change, those of us with lower incomes, from communities of color, and with poor health are disproportionately impacted by pollution and the changing climate.

That's because low-income families and communities of color often live closest to refineries, power plants, high-traffic roads, and other pollution sources, resulting in higher rates of asthma and respiratory problems.

In addition, rural and agricultural regions are also on the frontlines of climate disruption, experiencing frequent drought and forest fires.

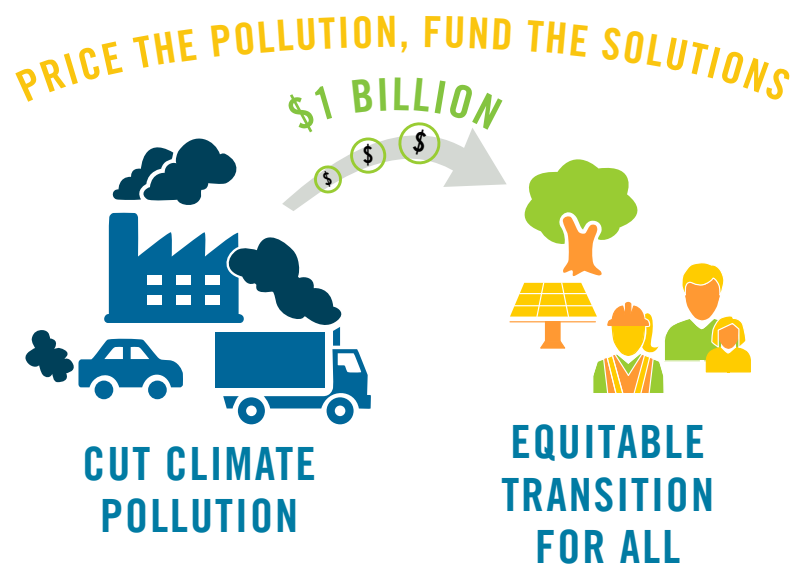
This policy directs one third of all investments that reduce pollution into communities hardest hit by pollution and poverty. It also:

- Provides financial protection for low-income families through mitigating increased energy costs.
- Ensures workers and communities in industries affected by the transition to a clean energy economy have the opportunity to maintain their quality of life, build skills, and attain family-wage jobs.
- Gives flexibility for energy-intensive businesses in Washington to create and sustain jobs in our state and enable efficient industries to thrive.

Learn more about our policy and our plan by visiting:
jobs-clean-energy.wa.com

HOW DO WE PAY FOR IT? PRICE THE POLLUTION

The policy will generate more than \$1 billion dollars per year by putting a price on fossil fuels used in Washington that damage our health and planet. The policy is designed to ensure Washington state reduces our climate pollution. If Washington remains on track to meet our pollution reduction obligations, the price on pollution will not go up. If we aren't meeting our obligations, the price on pollution will increase to ensure that we can grow our investments sufficiently to accelerate the transition to clean energy.



photos: ethan john; sdot; blm; dante b. garcia

